

**BIGSEE**

AWARDS NETWORK FESTIVALS REPORT 



## Office building ROAMING GROUP, Belgrade

July 30, 2020 | Architecture, BIG SEE Architecture Award 2020 - Winner, Public and commercial architecture, Serbia



This office building represents the final phase in the process of reconstruction of the existing steel construction system skeleton – a twenty years old. Utilising a strategy of adaptation and rebuilding a new volume has been formed around existing structural system as a response to



demands of contemporary business needs – multidisciplinary way of working. The building is designed as a string of five functionally independent floors with associated common areas – entrance area with designated contents at ground floor level and centrally positioned vertical core with lifts, sanitary areas and necessary services, as well as added parking area at the adjoining plot. Lighting elements that are both functional and decorative reveal an interesting experience providing an active re-modelling of the interior of the building in which changes in shadows and strong corporate colour identities alternate and are in contrast with anaemic colours of façade's and interior finishes.

### **What makes this project one-of-a-kind?**

The building adheres to simplicity presenting an almost straight cube with uniform materiality – a glass curtain wall highlighted with rhythmical openings. The only exception, driven by desire to avoid trend in manipulating recognizable elements and materials, is achieved with accentuated colonnade at the entrance level, therefore, creating an active relationship with the surrounding area and the users of the building.



## **Credits**

### **Architecture**

Biro VIA; Goran Vojvodić, Jelena Ivanović Vojvodić

### **Client**

Roaming Group  
Belgrade

### **Year of completion**

2017-2018

### **Location**

Belgrade, Serbia

### **Total area**

5000 m<sup>2</sup>

### **Site area**

1435 m<sup>2</sup>

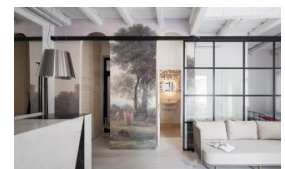
### **Photos**

Relja Ivanić

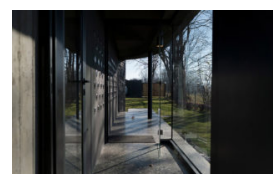
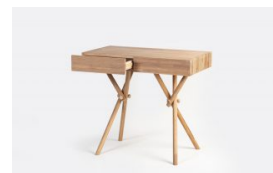
## **Project Partners**

EXING B&P  
Belgrade

## **Related posts**







Powered  
by



■ GEBERIT

\* intra lighting  
all visible

hansgrohe

AXOR

TECE

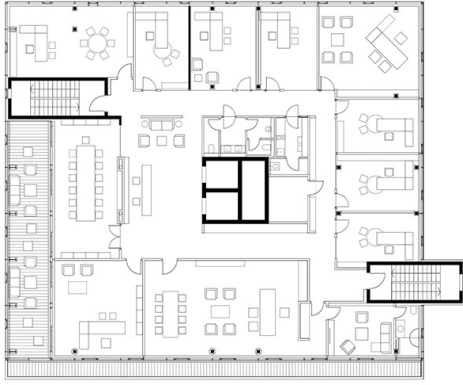
senčila bled





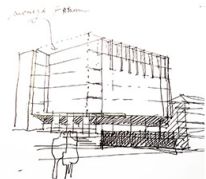
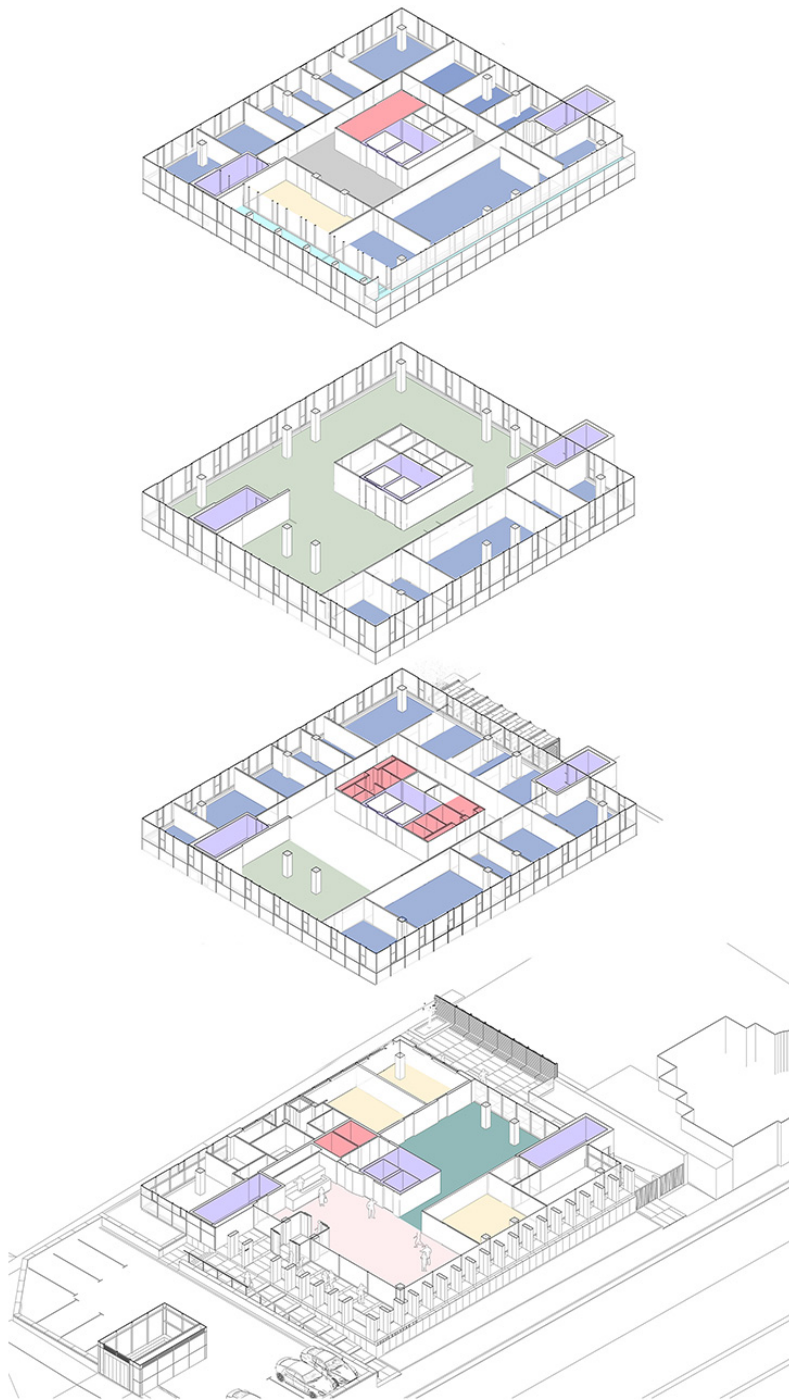




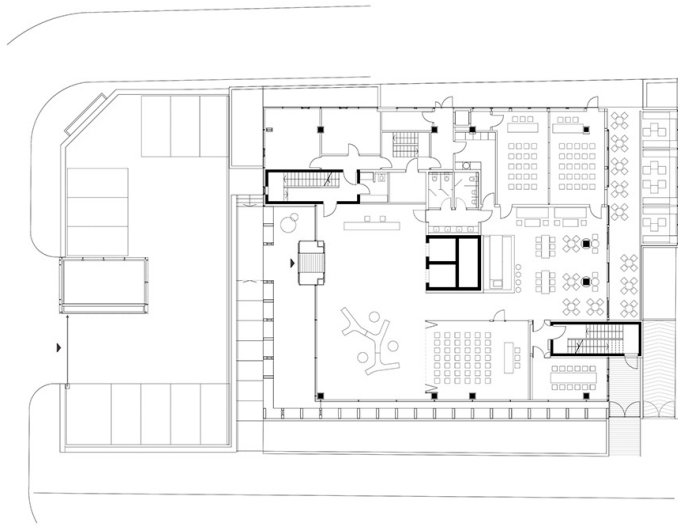
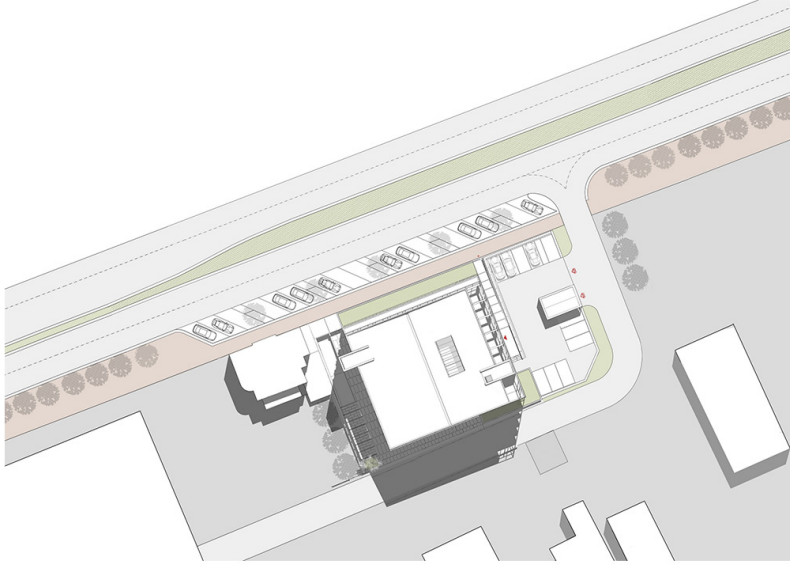


Osnova povucenog sprata / Withdrawn floor plan









Osnova prizemlja / Ground floor plan



Osnova tipskog sprata / Typical floor plan

**Zavod Big • BIG**

**SEE**

Contact us

BIG SEE about

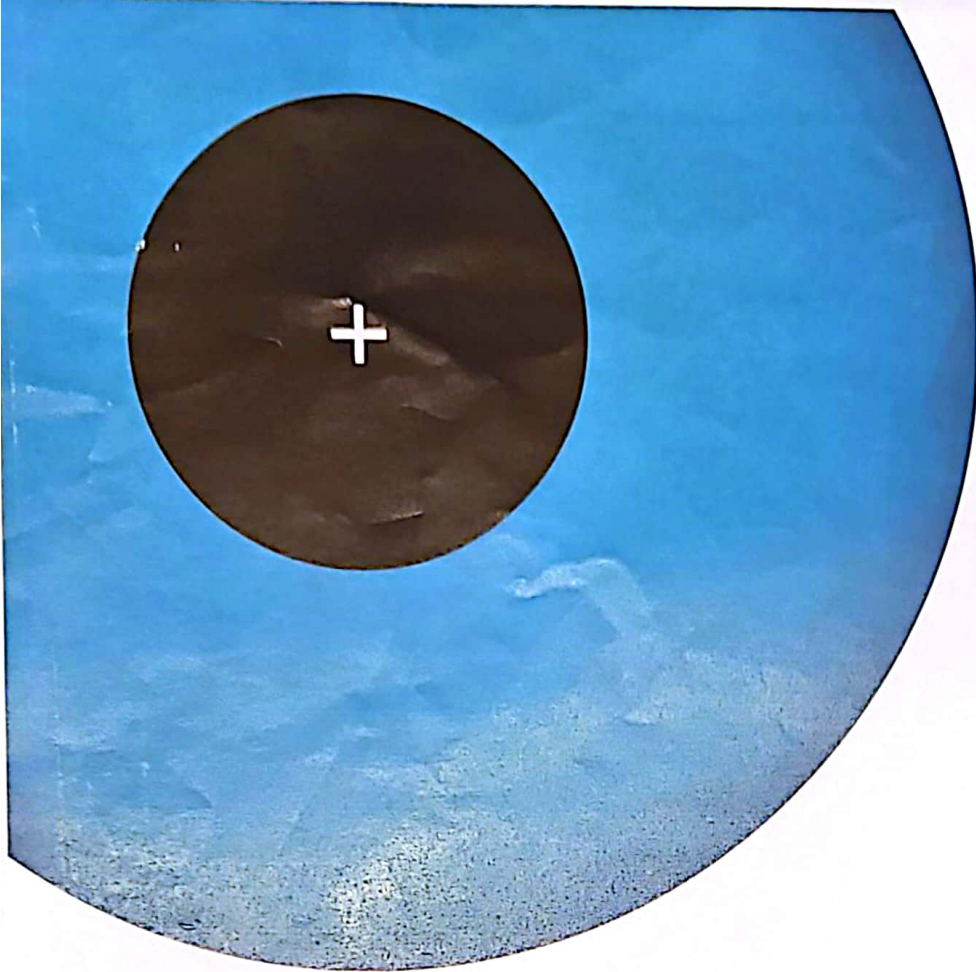
Interest for  
cooperation

Press

**SUBSCRIBE TO  
NEWSLETTER**

Copyright Zavod Big | All Rights Reserved | [Privacy Policy](#)





# **BIGSEE ARCHITECTURE AWARD 2020 WINNER**

Category: **PUBLIC AND COMMERCIAL ARCHITECTURE**

The Award is granted by Zavod Big to:

## **OFFICE BUILDING ROAMING GROUP**

Author: **Biro VIA; Goran Vojvodić, Jelena Ivanović Vojvodić**  
Location: **Belgrade, Serbia**

Director of Zavod Big:  
**Zmago Novak**



**BIGSEE**



**Zavod Big**  
[www.bigsee.eu](http://www.bigsee.eu)